

THE QUEST FOR THE DARK PLANET

© 1992-2011 JOHN P. FUNK

"The Quest for the Dark Planet" Assets inventory Worksheet Figures w/ Costumes, Robots, Props, Sets, SpaceShips & FX lighting

Character Uniform colors & division 16x 12" Action Figure Dolls:

Command = Gold, Engineering = Copper, Medical= Sapphire, Security= Gunmetal, Crgo/ Mnt = Peridot



Mary Lou Turbine: * Body suit, Fishnet top and pants- Boots- (*Vest, Skirt, Hat, Gauntlets, Holster/Gun, Backpack)- PDA
Commander Jack Halex: Black Flight suit/vest- Boots- Belt- PDA- Patches?

Captain Powell: Metallic Grey Flight suit- Boots- Belt- PDA- **Gal West Patches.**

1st. Officer Montgomery: Metallic Grey Flight suit- Boots- Belt- PDA- **Gal West Patches.**

Engineer Cheng: Metallic Grey Flight suit- Boots- Belt- PDA- **Gal West Patches. Engineering Tool Kit w/ Props.**

Crewmembers Soto, Lana and *Background Characters Metallic Grey Flight suit- Boots- Belt- **Gal West Patches & assorted gadgets.**

Security Officer: Metallic Grey Flight suit- Boots- Belt- **Gal West Patches & assorted gadgets.**

Dragon Fly Bounty Hunter & Props: Dark Flightsuit w/ Boots, **Alien Insect mask & Armor w/ LED - Engineering device- Laser prop- Comm Device.**

***Mob Boss:** Grey uniform with overcoat and boots. (*may use a different non-human character or head)

Da-un-zi Crystal Lifeform Environment Pod **may need some more painting adjustment**

Commander Azalia **Black & Grey Costume/Body Suit- small case or pouch- Comm Device**

Agent Zennia: Black Costume/Body Suit- small case or pouch- Comm Device.

Charm: Military Suit w/ Insignia and PDA.

***Dr. Valdheim:** Long Medical Jacket w/ Shirt-Pants-Boots and PDA.

***News Person:** Business or Professional Suit w/ boots & Headset.

***News cast characters**

Robots: miniatures with motorization and LED:

J65 Robot Droid: Mini Robot



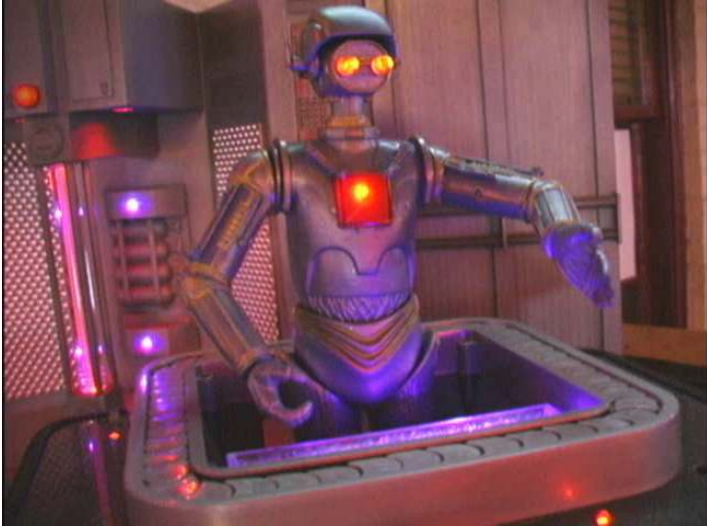
EMD: small wheeled props w/ LED ***Hall Droid:** small wheeled props w/ LED



"Quadroid" Alien Attack Robot: *motorized modified roboquad



Lounge Robot: Motorized "Bartender" bot.



Sets/ Props: Bridge: 2/3 view set with ceiling 1 base with rc motors and receiver (LED Floorlights)
2x lighted panels (LED consoles, Alert and overhead lighting), 1 captain's vid with railing. (LED monitor and console)
2x rc controlled chairs for animation. 1 lighted ceiling panel (LED Acrylic rod), 2x Corner panels



Bridge View Screen



Lounge: Converted cargo deck room- 4 total walls (Sharing Cargo Deck Set Ceiling lighting Grid) Needs Painting
1 side Panel with window (LED lights for set lighting)

Lounge props: 1 Lrg Lounge Table LED w/ 4x Chairs, 1 Lrg Fiber table light, 3x Fiber floor lights (LED)
1 Lrg Zoomie Console Prop (LED), Lounge Bar w/ 3x stools w/ animated Robot & hardware (LED enhancements)
Media Center w/ Chair (LED monitor, console & enhancements) *Lrg View Screen *Various lighting & props. (LED)



***Crew Quarter: Converted cargo deck room- 4 total walls (Sharing Lounge & Cargo Deck Set)**

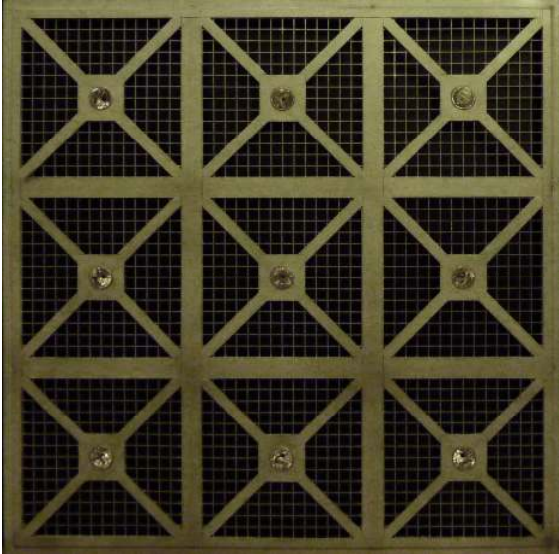
1x Storage Locker w/ clothes 1x desk w/ chair & small props 1x bed *asst. crew props details and lighting.

w/ Crew Furniture including: 1 Sml Lounge Table w/ 2x Chairs 1 Sml Fiber table light (LED) 1 Sml Media table Monitor



Cargo Deck Set: 3x wall Panels, 1 wall divider, 3x Large cargo pods, 2 small cargo box 1x Quadroid Cargo Pod
***assorted cargo details and lighting.**

1 Ceiling lighting Grid (universal lighted ceiling detail for sets)



Engine Room: 2/3 view set with ceiling Scale Engine room Deck (LED machinery, hallway and overhead lighting)



Plasma Reactor: 1 Close up section Reactor and power conduit w/ chamber. (LED machinery, Reactor Plasma and overhead lighting) 3 x Wall panels (1 full and 2x.5 sections + Special Ceiling Grid w/ Detail)



J-65 Cargo Pod Needs Painting Dark Matter/Energy Device

Hallway Corridor: Needs Painting 4x wall Panel sections with (LED color deck, walkway & Alarm lighting) 2x .5 panel, 1 corner connector, 2x Ceiling section (LED overhead lighting) 1 Angle Ceiling section 1 detail.



Station Security Center: 1x Background computer wall panel 1x Com Console 1x Floor Grid
Ceiling grid for use with Cargo and Lounge sets



**DragonFly Spaceship bridge/interior-2x walls w/LED's, Door Bulkhead, Bridge console *cockpit, interior details*



The A-List: Dorkbot party, 03.08.08



**ISF CityScape miniature (may be used for comm sequence) may need some painting and LED adjustment*

Space Ship/Station models- 12: all use active LED lighting

1 GW Mining Shuttle *needs minor repair*



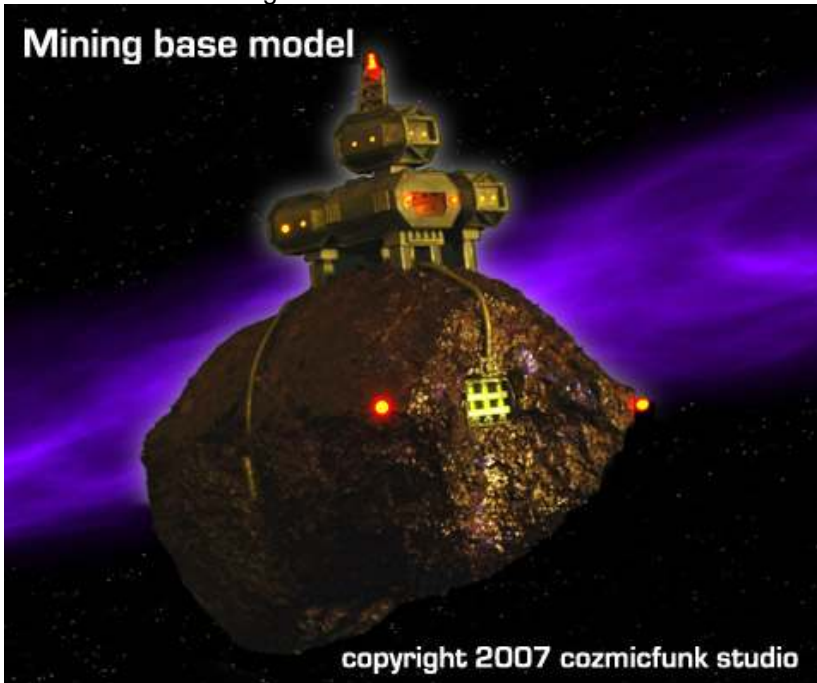
1 Sentry Scout (w/ Launch Deck)



1 Survey Ship



1 Asteroid Base Mining Base



1 AUW Interceptor



1 Pirate Bandit



1 Large X-6 space Base.- 1 Small background space Station



1 Xyrene Battlecruiser



3x *ISF (Cruiser Escort, APC, Special Ops)



Star field: 2x (for exterior ship & window shots)***Rail track system for model animation. (3 scales)**
Lighting Projection and FX: Laser Stars, LaserPod, Red, Green and Purple Laser, FX Lights, Fog Machine, LED for practical lighting- * **Objects and or Items that may be subject to change during production.**



THE QUEST
FOR THE
DARK PLANET

COPYRIGHT 1992-2011 JOHN P. FUNK